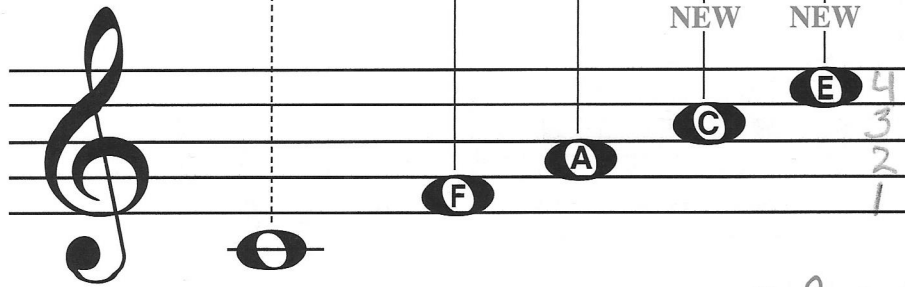
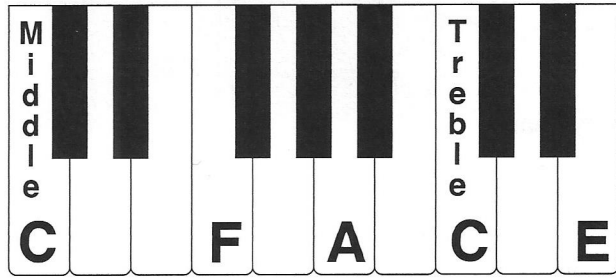


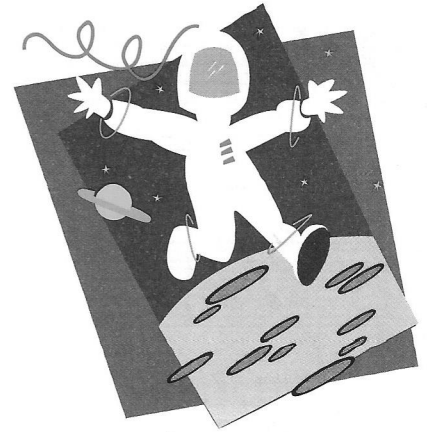


FACE the Treble Spaces

The space notes on the treble staff spell the word **FACE**.



- Find the F key just above Middle C.
- Play and say the treble space notes F-A-C-E.
Did you *step* or *skip*?



Skipping in Space

Steady

1

Note names: _____ (2 - 3) _____ (2 - 3) _____ (2 - 3) _____ (2 - 3)

mf

Pedal down

5

L.H. 2 crosses over to E

p

Pedal up



Can you play this piece with a L.H. cross-over to F? Cross-over to A? To C?